



TIR COED

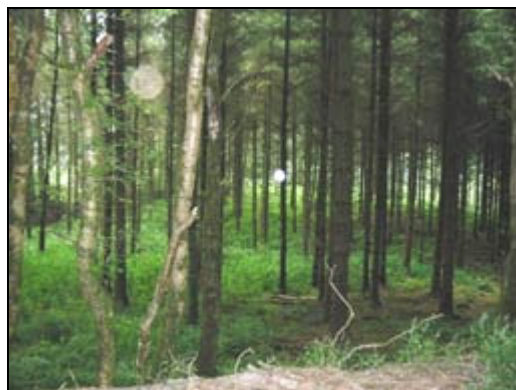
WOODLAND MANAGEMENT & PRODUCTS

A) “Tree Talk” – managing small woodlands

This workshop, held on the 19th of September, 2003, looked at the different aspects and objectives of managing small woodlands. We visited 2 woodlands in the Llanfarian area with very different management problems.

The subject areas covered included:

- Species identification;
- Tree selection for thinning;
- Extraction methods;
- Potential uses for various species;
- How to manage ground cover;
- Managing woodlands for conservation;
- Social and community benefits of woodlands;
- Woodland grant schemes and regulations.



B) On Farm Timber Conversion Demonstration

This demonstration was held at Maenarthur Farm, Pontrhydygroes, on the 25th of September, 2003, in partnership with Farming Connect.

The aim of the event was to present woodland owners with working demos and talks highlighting the benefits (or limitations) of hiring in mobile saws and processors. **The machinery demonstrated included 2 mobile saws, a log splitter, a firewood processor and a wood chipper.**

Substantial information packs were prepared showing the actual costs and projected returns of converting the smaller diameter timber on this farm; guidance on producing planks and flooring boards and stacking timber for air drying were included, as well as FC guidance sheets on coppice

products and sawmilling low and high grade timber from farm woodlands. In addition, info on the expected outputs and cost of hiring the machinery demonstrated during the event, details of current Woodland Grant Schemes and felling regulations and a copy of the Ceredigion Wood Directory were contained in the information pack.

Representatives from Forestry Commission Wales, Coed Cymru, Farming Connect, the Welsh Development Agency, Countryside Council for Wales, Forestry Contracting Association and Tir Coed were in attendance.



OAK:

The Oak site was a remnant of the ancient sessile forest and showed evidence of either coppicing or clear felling in the past. This had led to an even aged site with no regeneration (due to continuous livestock grazing). The last felling could well have been during the first world war.

The site was approx. 0.9ha (2.2 acres) and was situated on a bank above a stream; it was not on any woodland grant schemes. Having had no management over the past two generations, the plan was to take out the poorer stems during this first thinning, leaving the better quality timber to mature. The next thinning should take place in 7 – 10 years time, when better quality stems will be available.

Extraction, sorting and stacking took place, under dry conditions, within two working days during early September by two local woodland contractors using a 90 h.p. Massey Ferguson tractor with front end loader and 3-tonne timber winch.

The felled Oak was converted into fencing posts, strainers, square gate posts, planks, beams (mostly character, i.e. with large knots and other defects) and firewood.

Some of the brash was chipped for demonstration purposes, although the majority was left in the woods to benefit the wildlife. Much of the fencing materials and gate posts produced will be utilised on farm; the planks and beams were sold at a local timber auction.

LARCH:

The Larch presented was from an early 1950s plantation growing on a slope behind the farmhouse. The Larch was felled in order to demonstrate the saws' abilities to work on larger diameter timber.

The felled Larch was converted into square gate posts, planks and beams. The gate posts produced will be utilised on farm, the planks and beams were sold at a local timber auction.

For financial information on the above contact [Tir Coed](#).

C) Timber Auction

Following an idea brought to us by a private woodland owner from the valley, Tir Coed held a timber auction in the Ystwyth, the aim being to offer a central location where small (and large) parcels of timber could be sold. The timber could be presented for sale in any form.

It was certainly a buyer's day as the prices realised were low. However, it was an excellent opportunity for timber growers and end users to network.

At the end of the day, the sellers were keen on holding a similar event next year.

We propose to hold a 2nd timber auction in the Autumn of 2004.



D) Timber Extraction Demonstration.

Tir Coed staged a well supported timber extraction demonstration in October, 2004 in the woodland of the National Trust's Dinefwr Park near Llandeilo. The woodland, which was loaned for the event by the Wildlife Trust for South and West Wales, contains a mixture of tree species of various ages. It is fairly typical of the type of woodland environment owned by farmers and landowners throughout Wales.

Diversification in farming is very much the clarion call today and capitalising on the frequently neglected wooded areas opens up opportunities to generate income from timber sales and reduce the operating costs of holdings by, for instance, providing materials for fencing and fuel.

Tir Coed had arranged for members of the Forestry Contracting Association and local contractors to demonstrate the safe and effective methods of extracting and handling timber using agricultural tractor based equipment such as winches, quad bikes and log chutes. In addition to machinery, great interest was shown in a horse logging extraction demonstration conducted with the aid of 'Monty', a large mule who impressed everyone with his skill and understanding of his duties.



Horses were shown to be able to cope with wet, sloping and narrow access situations, typically found in rural Wales, where machinery would be unable to operate. Additionally, it was clear that, when using horses in preference to heavy machinery, minimal environmental damage and disturbance was caused to the land and it's delicate balance of fauna and flora.

Forestry Commission Wales and Coed Cymru supported the event and both organisations had experts on hand to help and advise visitors.

Tir Coed presented a pack of useful literature to all visitors on arrival and many of the helpful technical leaflets produced by Forest Research, the research agency of the Forestry Commission were included in the packs.

E) "Working Your Woods" Open Day

In February, 2005, the 40 acre woodland of Brynmelin, Llanwrin near Machynlleth was the venue for a Tir Coed open day, supported by the Welsh Development Agency, designed to assist farmers and landowners to capitalise on the wooded areas of their holdings by adding value to extracted timber.

Brynmelin, being a typical Welsh farm, incorporates areas of steep, wooded land which have been effectively utilised by the owner, Mr. Hugh Jones, through a programme of replanting and thinning.

Currently, Hugh has a ready market for oak fencing stakes which are in demand by holdings involved in the Tir Gofal agri-environment scheme.

Coed Cymru's Mike Richards was on hand to offer valuable information on available markets and marketing techniques. Fencing and building grade timber products for use on the holding together with firewood for sale and home use can make important contributions to the viability of modern farm businesses.

Members of the Forestry Contracting Association, as well as local contractors, provided opportunities to see and discuss an impressive range of portable on-site processing machinery in action, machinery which is able to visit holdings as and when required.



A portable sawmill, log splitter, firewood processor and an ingenious chainsaw attachment which allows the operator to produce uniform planks from timber in the round, were all shown working.

Chainsaw carving was also demonstrated as an option of adding value to poor grade timber.

Ian Sheffner (forest operations specialist) was in attendance to cover the safety aspects of operating forestry machinery. He also demonstrated a self-build log chute, utilising recycled plastic 45 gallon drums, halved and bolted together; this was set up to show how harvested timber could be extracted from difficult areas where steep slopes and narrow access would otherwise present problems.



In addition, Tir Coed presented a pack of useful literature to all visitors on arrival.